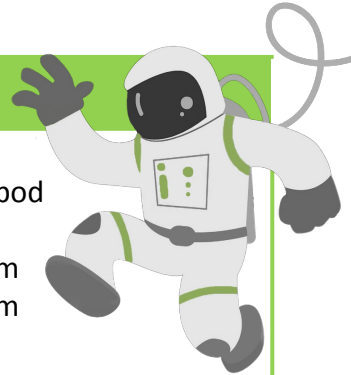


2023 College Mentor Job Description

If you are passionate about making a positive impact on the future of our students, this is an opportunity you won't want to miss. Bilingual candidates are highly encouraged to apply!

Silicon Valley Education Foundation has been partnering with school districts since 2008 to offer Elevate [Math], a yearly summer acceleration program to prepare 3rd-10th grade students to successfully complete their next level math course. Elevate [Math]'s goal is to support students who are nearly meeting standard in their college and career pathway, particularly those furthest from access and opportunity.

College Mentors play a critical role in preparing Elevate [Math] students for college. Working inside and outside of classroom, College Mentors serve as role models to our students, expand their horizons, and inspire and reinforce their motivation to go to college.



Elevate [Math] Program Details

Paid Professional Learning	<ul style="list-style-type: none"> ● Program Orientation & Professional Learning (12 hours) Mandatory pre-program synchronous and self-paced training (Nearpod lessons/webinars) Professional Learning via Zoom: <ul style="list-style-type: none"> ● Session 1: May 10, 9am-12:30pm OR May 17, 1pm-4:30pm ● Session 2: May 11, 9am-12:30pm OR May 18, 1pm-4:30pm ● Connect With Your Teachers: TBD ● Professional Learning Community (2 hours) Meet with Elevate [Math] Staff and other College Mentors via Zoom to learn and share common classroom approaches, work through misconceptions, and develop best practices. (time and date TBD)
Program Logistics	<p>Specific dates for the 19-day (3rd-8th grade) and 24-day (9th-10th grade) programs are determined by each district, starting mid-June (end dates vary between July and August)</p> <p>Each session runs on average for 3.5-4.5 hours a day (4-5 days a week), but exact hours are determined by district needs.</p>
Location	<p>Classes will be held in person in the Greater Bay Area from Soledad up to San Francisco and in between like Alameda, San Mateo, Santa Clara, San Jose, San Leandro and more. You will be placed based on your location and preferences selected in the application.</p>
Compensation	<p>Elementary & Middle School Programs (19 days): \$2,420 (payroll taxes apply)</p> <p>High School Programs (24 days): \$2,970 (payroll taxes apply)</p> <p><i>* Full compensation includes complete fulfillment of all PL and PLC dates, daily class commitment, out-of-class prep, and required logistics.</i></p> <p>Referral Bonus: Receive a \$50 gift card when you and your referred College Mentor both complete the Summer Program!</p>

Responsibilities | Duties

- Support 3-6 classrooms with math instruction, college readiness activities, and STEM Career Talk facilitation
- Deliver 5-6 college readiness lessons for each assigned classroom (as many as possible based on time)
- Provide IT support to teachers, students, and families
- Provide administrative support (e.g. calling parents and recording student attendance)
- Reinforce norms (e.g. supporting group discussions in person or via zoom)
- Serve as a mentor and positive role model to students
- Engage with students by asking questions during pair-share or small group sessions
- Support with technology tools such as Zoom, Google Classroom, or Nearpod
- Support teacher and program with other various assigned tasks

Qualifications | Background

- Currently enrolled in college or a recent college graduate
- Interest in working with 3rd-10th grade students in an academic setting
- Demonstrated written, verbal, and digital communication skills
- Ability to teach SVEF-provided college readiness curriculum to a classroom of up to 25 students
- Ability to work both independently and collaboratively in a classroom
- Proof of TB test results, COVID-19 Vaccination and fingerprinting are required prior to working with students. Costs will be reimbursed by SVEF.
- Access to reliable transportation

Apply [Here!](#)

If you have any questions, please email max@svefoundation.org



Alum Rock Union School District
Bayshore Elementary School District
Berryessa Union School District
Cambrian School District
Campbell Union School District
Cupertino Union School District
Downtown College Prep Charter
East Side Union High School District

Elevate [Math] Partnerships

Evergreen School District
Franklin- McKinley School District
Gilroy Unified School District
Lodi Unified School District
Menlo Park City School District
Moreland School District
Mountain View Whisman School District
Mount Pleasant School District
Oak Grove School District
Orchard School District
Pajaro Valley School District
Pierce Joint Unified School District

Redwood City School District
Salinas City Elementary School District
San Bruno Park School District
San Leandro Unified School District
Santa Clara Unified School District
Sequoia Union High School District
Soledad Unified School District
South San Francisco Unified School District
Voices Franklin McKinley

SVEF is an equal opportunity employer. All qualified applicants will receive consideration for employment without regard to race, color, religion, national origin, sex, sexual orientation, gender identity, veteran status, and disability, or other legally protected status.

1400 Parkmoor Avenue • Suite 200 • San Jose • 95126

elevate@svef.com • svef.com/elevate