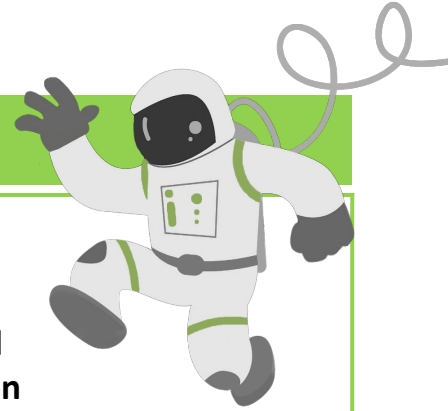


2023 Teacher Job Description

Silicon Valley Education Foundation has been partnering with school districts since 2008 to offer Elevate [Math], a yearly summer intervention program to prepare students to successfully complete their next level Common Core math course. Elevate [Math]'s goal is to support "nearly meeting standard" students in their college and career pathway.

Elevate [Math] offers programs for rising 3rd - 10th graders.

Elevate Every Summer!



<p>Professional Learning (30 hours)</p>	<ol style="list-style-type: none"> <p>Professional Learning Attendance is required at all PL sessions Session 1: in person or virtual</p> <ul style="list-style-type: none"> April 19th and 20th, 4:00-6:00 pm virtual OR April 22nd, 8:30am-12:30pm in person <p>Sessions 2 - 4: virtual</p> <ul style="list-style-type: none"> April 29th, 8:30am-12:30pm May 6th, 8:30am-12:30pm May 20th, 8:30am-12:30pm <p>Professional Learning Communities, Coaching Sessions and Asynchronistic hours</p> <p>Meet with your Elevate [Math] coach and other teachers to share common best practices. The PLC will meet once prior to the first day of class and then twice during the program.</p> <p>Continuing Education Units (2 units)</p> <p>Earn up to two CEUs for attending PL.</p>
<p>Program Times</p>	<p>The 19-day (3rd-8th grade) and 24-day (9th-10th grade) programs will run approximately mid-June through end of July.</p> <p>Each session runs on average for 3.5-5 hours a day, but are determined by district needs.</p>
<p>Location</p>	<p>Each class is held at a specific site determined by each district in-person learning.</p>
<p>Compensation</p>	<p>Elementary & Middle School Programs: \$6,200 (payroll taxes apply) High School Programs: \$6,200-\$7,500 depending upon how many hours the classes are (payroll taxes apply)</p> <p><i>*Full compensation includes fulfillment of all PD and PLC dates, daily instruction, and required logistics.</i></p> <p>Referral Bonus: Receive a \$100 bonus if you refer a new teacher and the referred teacher and yourself <u>complete</u> the summer program.</p> <p>Early Signing Bonus: Sign up by January 14th and receive a \$100 gift card.</p>

Why Elevate [Math]

- Help students prepare for success in math using curriculum that closely aligns with Common Core State Standards and Smarter Balance testing
- Learn and practice different instructional strategies and use a blended learning model
- Professional development offers new tools and strategies for Common Core teaching

Over 90% of students enjoyed the way they learned in Elevate [Math].

Join us in making math an exciting part of their education!

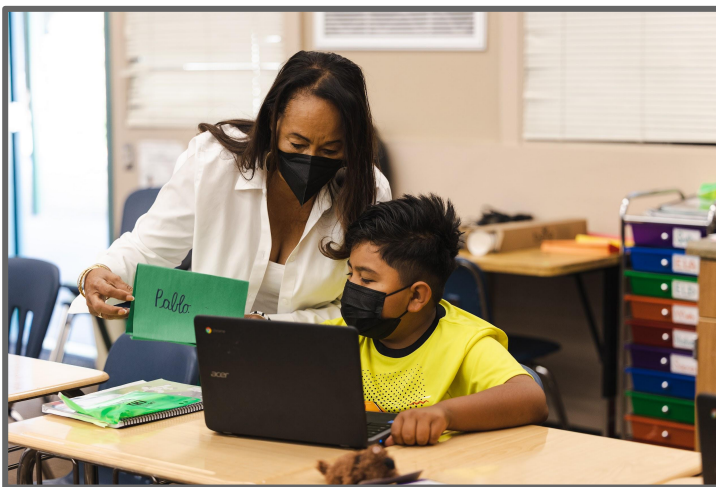
Responsibilities | Duties

- Oversee and provide instruction for a classroom
- Ensure meeting of goals for increasing student math understanding, building study skills, and strengthening aspirations for college
- Facilitate the pre-post assessment plan, attitudinal surveys, and other assessments for teachers and students
- Integrate technology to strengthen access to online curriculum and tools
- Track attendance and communicate students' attendance concerns with families and Elevate [Math] staff

Qualifications | Background

- California Teaching Credential (preferably in math and/or science)
- SVEF fingerprinting required. District-specific fingerprinting may be required.

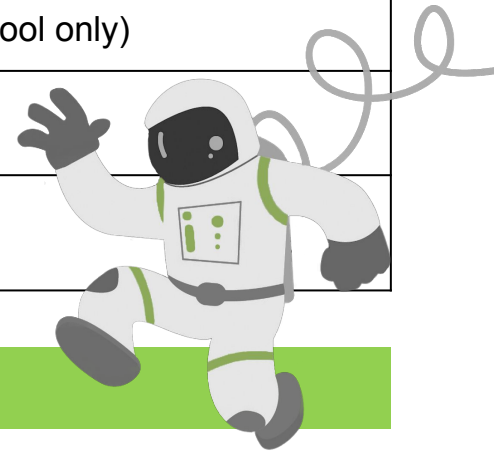
Apply Now [Here!](#)



2023 Summer Programs

Elevate [Math] is proud to continue evolving its program through summer results, teacher, college mentor, and student surveys, and other feedback. We are excited to offer our programs for grades 3-10 for Summer 2023.

Grades	Rising 3rd-10th graders
Length	-3rd-8th: 19 days, approx. 3.5-4 hrs/ day plus 15 minutes before and after class -9th-10th: 19-24 days, approx. 3.5-5.5 hrs/ day
Curriculum	-Elevate [Math] common core aligned curriculum -Blended math and literacy (in 3rd-5th)
Professional Learning	-PL, PLC, and Coach Support (30 Hours)
Classroom Support	-College Mentor (1 CM : 3 Classes) -Coach (1 coach : 10 Teachers)
College Awareness	-UC Berkeley College Curriculum -College Exploration Session (High School only)
Growth Mindset	-Integrated curriculum
STEM/Career Awareness	-STEM Career Talk Presentation -STEM Activity



Elevate [Math] Partners

Alum Rock Union School District
Bayshore Elementary School District
Berryessa Union School District
Cambrian School District
Campbell Union School District
Cupertino Union School District
Downtown College Prep Charter
East Side Union High School District
Evergreen School District
Franklin- McKinley School District

Gilroy Unified School District
Lodi Unified School District
Menlo Park City School District
Moreland School District
Mountain View Whisman School District
Mount Pleasant School District
Oak Grove School District
Orchard School District
Pajaro Valley School District
Pierce Joint Unified School District

Redwood City School District
Salinas City Elementary School District
San Bruno Park School District
San Leandro Unified School District
Santa Clara Unified School District
Sequoia Union High School District
Soledad Unified School District
South San Francisco Unified School District
Voices Franklin McKinley